

IBOX-103-2L3C



- Full aluminum alloy anti-interference structure
- Modular parts with strong scalability
- Fully enclosed with fanless cooling system
- Cable-free design for better vibration resistance
- Scientific and reasonable interface layout
- Double board design with diverse interfaces



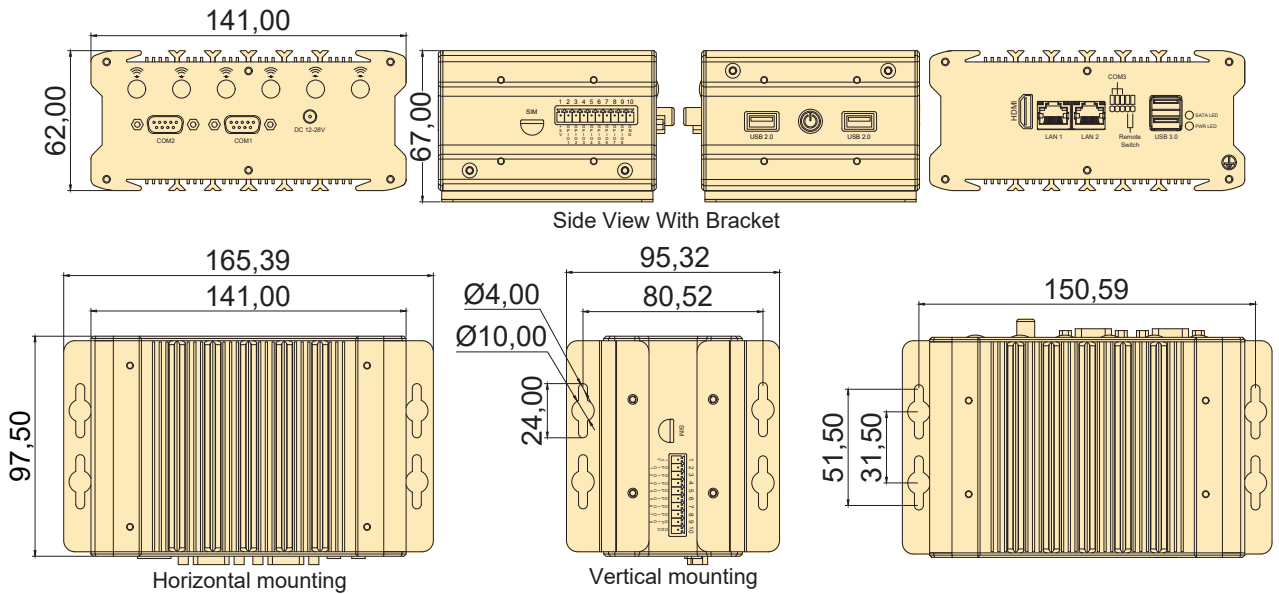
The actual appearance is subject to the final configuration.

Specifications

| | | | | |
|---------------------------------|--------------------------------------------------------------------------------------------|------------------------------------------------------------------------------------------------------------------------------------------------------------------|---------------------------|------------------------------------------|
| Model | IBOX-103-2L3C | | | |
| Supported OS | Win 7, Win 8, Win 10, Win11, Linux (Ubuntu, Debian, Kali, CentOS, etc.); WES 7; Win 10 IoT | | | |
| CPU | Series/ Model | Intel® Core™ 11th Gen. CPU Intel® Celeron® 6305E | Intel® Core™ 8th Gen. CPU | Intel® Celeron® J1900 |
| | TDP | 28W default, 12W/15W BIOS optional | 15W Base, 25W Max | 10W Max |
| RAM | SO-DIMM | 1* DDR4 SO-DIMM Socket | 1* DDR4 SO-DIMM Socket | 1* DDR3L SO-DIMM Socket |
| | Frequency | 3200MHz | 2133/2400MHz | 1600MHz |
| | Capacity | Up to 32GB | Up to 16GB | Up to 8GB |
| Storage Devices | M.2 | 1* M.2 (NGFF) 2242 B-key Slot (SATA3.0) | | 1* M.2 (NGFF) 2242 B-key Slot, (SATA2.0) |
| I/O Interface | COM | 2* RS232/485 with Select Jumper (COM1/2, full lanes, DB9); 1* RS232/485 with Select Jumper (COM3, 2 lanes, 5-Pin, 2.54mm, Terminal Block, with PWR-ON signal) | | |
| | Ethernet | 1* Intel i211+1* Intel i219 GbE LAN | | 2* Intel i210 GbE LAN |
| | USB | 2* USB3.0+2*USB2.0 | | 1*USB3.0+3*USB2.0 |
| | Video | 1* HDMI, 4096x2304@60Hz; | 1* HDMI, 4096x2304@24Hz | 1* HDMI, 1920x1080@60Hz |
| | Audio | 1* Audio Header (Line-out + MIC); With 7.1 channel HD Audio Codec Realtek ALC897 | | |
| | SIM | 1* External SIM card slot connected to M.2 B-key slot | | |
| | Power supply | 12V-28 DC; 1* DC Threaded Jack (5.5* 2.5mm) | | |
| | Other | 1* 8-bit GPIO, Terminal Block (10-Pin, 3.5mm), 4-Inputs/4-Outputs, 0-5V Input Range; 1* Remote Switch Terminal (5-Pin, 2.54mm, with COM3) | | |
| Extended Capabilities | Additional Internal Interface | 1* M.2 3042/3052 B-key Slot with 1* Nano SIM Card Slot (PCIe+USB2.0, support 4G/5G, default 4G, 3042) 1* M.2 2230 E-key Slot (PCIe+USB2.0, support WiFi+BT) | | |
| Environment | Operating Temperature | -10 ~ 55 °C w/ 0.7m/s Airflow | | |
| | Storage Temperature | -40 ~ 85 °C (-40~185 °F) | | |
| | Relative Humidity | 40 °C @ 95%, Non-Condensing | | |
| Physical Characteristics | Dimensions | 141* 62* 97.5 mm (W* H* D) | | |
| | Net Weight | 1.2 KG | | |
| Regulation | EMC | CE/FCC Class B, CCC | | |
| | Safety | CE-LVD, RoHS, CCC | | |

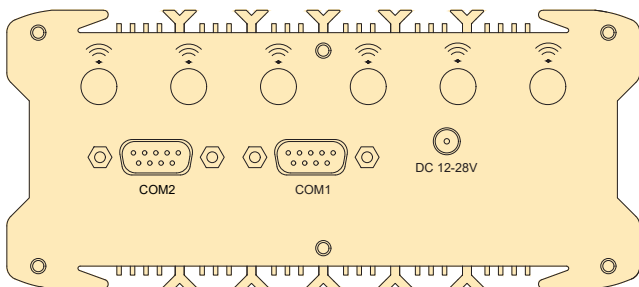
Dimension

Unit:mm

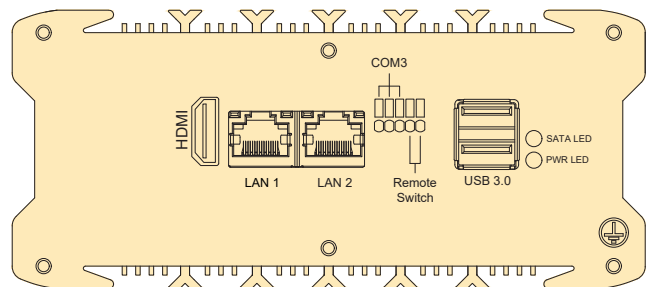


The actual appearance and dimensions are subject to the final configuration

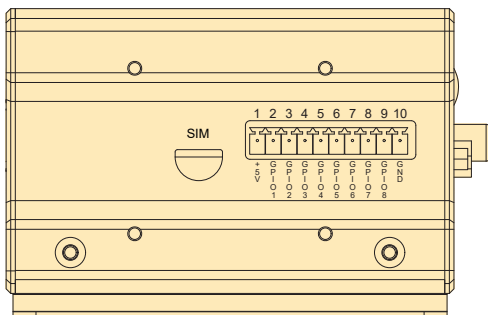
Front Panel External I/O Mechanical Layout/Drawing



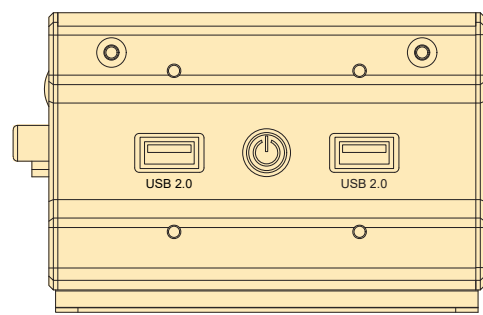
Rear Panel External I/O Mechanical Layout/Drawing



Left Panel External I/O Mechanical Layout/Drawing



Right Panel External I/O Mechanical Layout/Drawing



Ordering Information

| SO-DIMM Socket | M.2 2280 B-key Slot | M.2 2230 E-Key Slot | RS232/RS485 | GbE LAN | USB 2.0 | USB 3.0 | HDMI | External SIM Slot | 8-bit GPIO | Remote Switch | Power Supply |
|----------------|---------------------|---------------------|-------------|---------|---------|---------|------|-------------------|------------|---------------|--------------|
| 1 | 1 | 1 | 3 | 2 | 2 | 2 | 1 | 1 | 1 | 1 | DC 12~28V |

Processors Info & Available List

| CPU | Code Name | Total Cores | Total Threads | Max Turbo Frequency | Base Frequency | Cache | TDP | Memory Types | Integrated Graphics |
|------------------------|--------------|-------------|---------------|---------------------|----------------|--------------------------|--------|--------------|--------------------------------|
| Intel® Celeron® 6305E | Tiger Lake | 2 | 2 | - | 1.80 GHz | 4 MB Intel® Smart Cache | 15W | DDR4 | Intel® UHD Graphics |
| Intel® Core™ i3-1115G4 | Tiger Lake | 2 | 4 | 4.10 GHz | 1.70 GHz | 4 MB Intel® Smart Cache | 12-28W | DDR4 | Intel® Iris Xe Graphics; 48Eus |
| Intel® Core™ i5-1135G7 | Tiger Lake | 4 | 8 | 4.20 GHz | 2.40 GHz | 8 MB Intel® Smart Cache | 12-28W | DDR4 | Intel® Iris Xe Graphics; 80Eus |
| Intel® Core™ i7-1165G7 | Tiger Lake | 4 | 8 | 4.70 GHz | 2.80 GHz | 12 MB Intel® Smart Cache | 12-28W | DDR4 | Intel® Iris Xe Graphics; 96Eus |
| Intel® Core™ i3-8145U | Whiskey Lake | 2 | 4 | 3.90 GHz | 2.10 GHz | 4 MB Intel® Smart Cache | 15W | DDR4 | Intel® UHD Graphics 620 |
| Intel® Core™ i5-8265U | Whiskey Lake | 4 | 8 | 3.90 GHz | 1.60 GHz | 6 MB Intel® Smart Cache | 15W | DDR4 | Intel® UHD Graphics 620 |
| Intel® Core™ i7-8565U | Whiskey Lake | 4 | 8 | 4.60 GHz | 1.80 GHz | 8 MB Intel® Smart Cache | 15W | DDR4 | Intel® UHD Graphics 620 |
| Intel® Celeron® J1900 | Bay Trail | 4 | 4 | - | 2.00 GHz | 2 MB L2 Cache | 10W | DDR3 | Intel® HD Graphics |

- When the devices work with 11th Gen. Intel® Core™ processors, it should be working with external fan kit.
- All products and company name listed are trademarks or trade names of their respective companies.

Packing list

| Default Items | Qty |
|-------------------------|-----|
| IBOX-103-2L3C Unit | 1 |
| AC-to-DC Adapter | 1 |
| Wall mounting bracket | 2 |
| Power cable 3-pin 150cm | 1 |

Options for default items

| Optional Items | Qty |
|------------------------------------|-----|
| Power cable 3-pin 150cm, USA type | - |
| Power cable 3-pin 150cm, EU type | - |
| Power cable 3-pin 150cm, UK type | - |
| VESA mount kits | - |
| DIN Rail mount kits | - |
| External Fan Kit For 11th Gen. CPU | - |

Optional accessories or internal modules for unit

| Optional Items | Max Qty | Description |
|-----------------------------|---------|----------------------------|
| 4G Module | 1 | Connected by M.2 interface |
| 5G Module | 1 | Connected by M.2 interface |
| WiFi Module without AP mode | 1 | Connected by M.2 interface |

!! Note: As this product has expansion slots, please consult sales for the specific maximum number of expandable interfaces.