

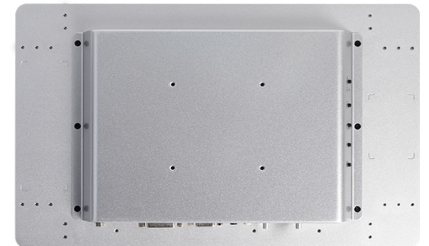
IDP-FL-1560W



- COM port (Optional), support long distance touch(Within 15m)
- Rugged die-cast aluminum chassis for harsh environments
- Projected Capacitive Touchscreen, Smooth user interaction
- Support medical gloves and protective gloves
- Wide Range DC 12~26V Power Input
- Support multiple cut out dimension make installation a snap
- OCA fully fit technology, Slim and light, attractive appearance
- Multiple signal interfaces with HDMI, VGA & DVI
- Support touch function even when there is water on panel(Optional)



The actual appearance is subject to the final configuration



Introduction

TP-IPC Industrial grade OCA fully fit capacitive touch monitor IDP-FL-1560W with 6H hardness and IP65 waterproof front panel. The chassis is made of die-cast aluminum, rugged and dust-proof specially for harsh industrial environments. COM port is optional, support long distance touch(Within 15m), its anti-interference ability is far more than USB. Smart chassis design support multiple cut out dimension make installation a snap, support vertical, horizontal, desktop, and embedded installations.

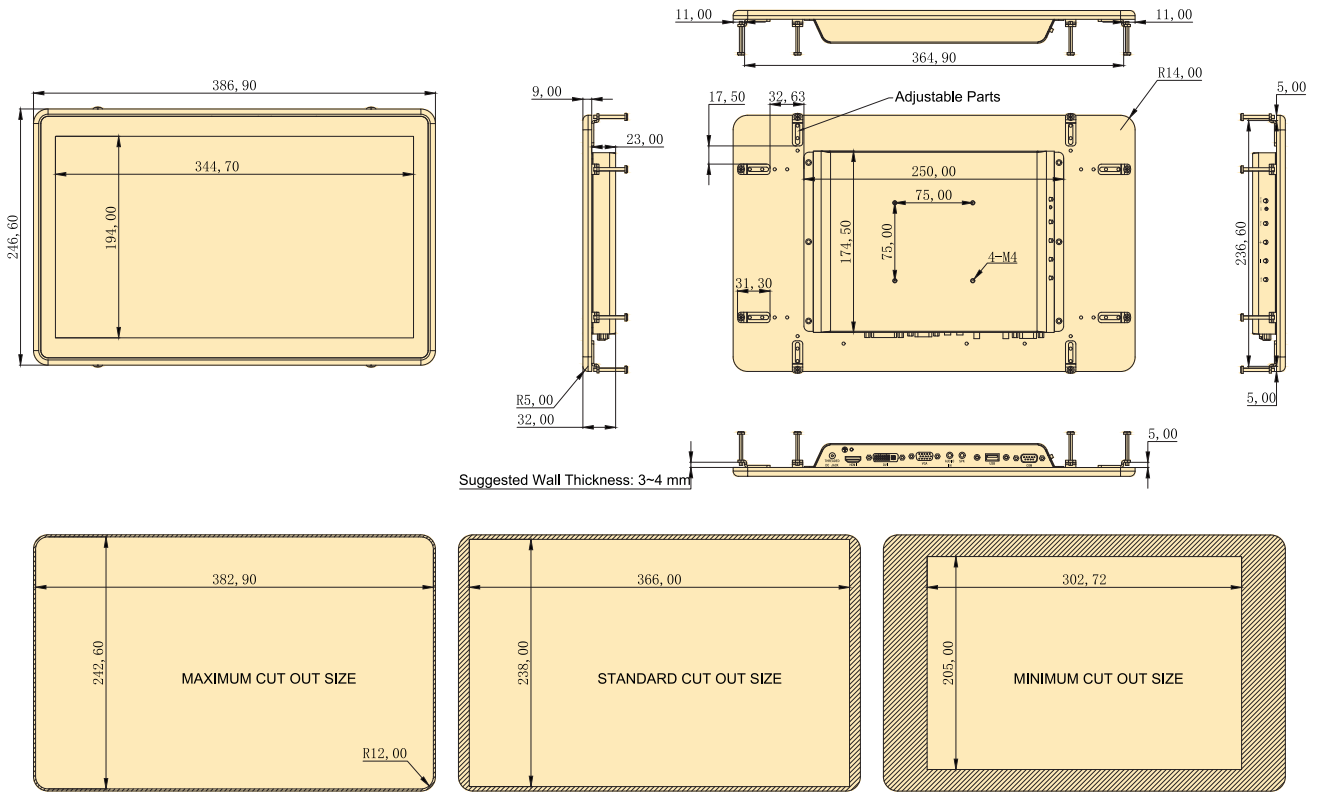
Specifications

Model	IDP-FL-1560W	
Display Information	Size & Ratio	15.6", 16:9
	Resolution	1920*1080
	Brightness	300 cd/m ² (Typ.)
	Viewing Angle	85/85/85/85 (Typ.)(CR>=10)
	Contrast Ratio	800:1 (Typ.)
	Display Colors	16.2M(6bit+2FRC)45%
	Display Area	344.16(H) × 193.59(V)
	Response Time	20 (Typ.)ms
	Frequency	60Hz
Pixel pitch	179.25(H) × 179.25(V)	
Touchscreen	Touchscreen Type	Projected Capacitive Touchscreen
	Touchscreen Method	Ten point
	Surface	6H
	Durability	-
	Transparency	>=85%
Environment	Operating Temperature	0 ~ 70 °C w/ 0.7m/s Airflow
	Storage Temperature	-20 ~ 60 °C (-4~140 °F)
	Relative Humidity	40 °C @ 90%, Non-Condensing
I/O INTERFACE	Vide & Audio	1* HDMI, 1* DVI-I, 1* VGA, 1* Audio In, 1*SPK
	Touchscreen Interface	1* Touchscreen Lockable USB; Optional with Touchscreen RS-232 DB9 serial port
	Power Supply	9-32V DC with ESD Protection; 1* DC Jack(5.8*2mm)
Physical Characteristics	Dimensions	386.9* 246.6* 32mm (W* H* D)
	Net Weight	1.7KGS(The final weight is subject to the final configuration)
Regulation	EMC	CE/FCC Class B, CCC
	Safety	CE-LVD, RoHS, CCC

Dimension

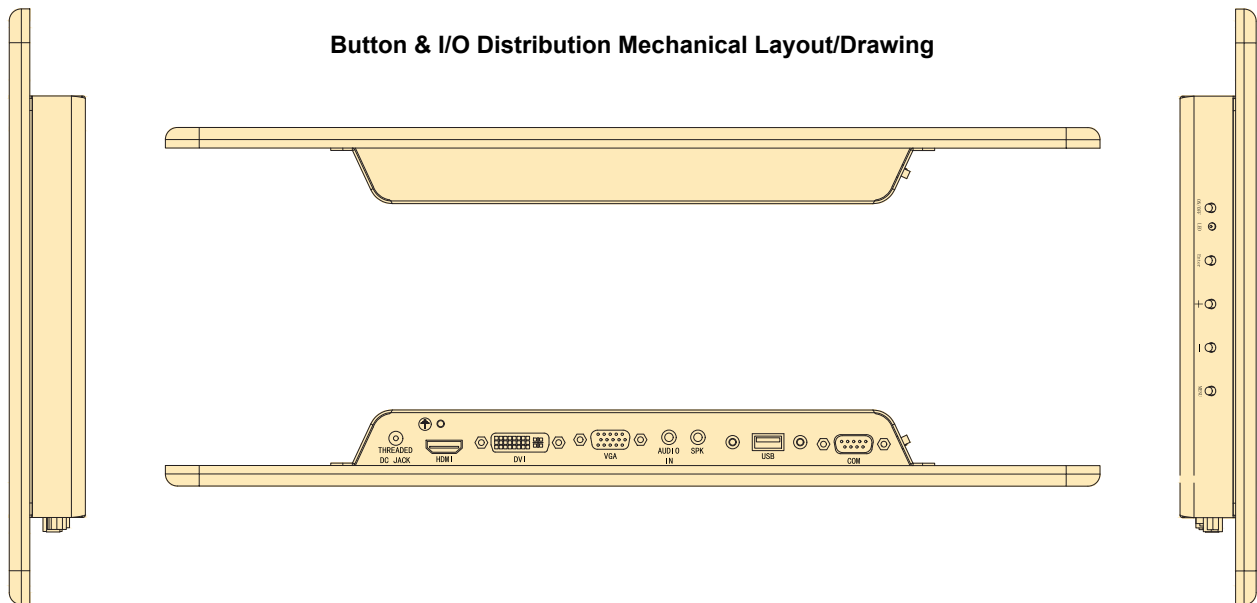
Screen size: 15.6"
Resolution: 1920*1080

Unit:mm



The actual appearance and dimensions are subject to the final configuration.

Button & I/O Distribution Mechanical Layout/Drawing



Ordering Information

Part No.	Brightness(cd/m2)	Touch Screen	Video & Audio I/O	Touchscreen Connector	Power Connector	Power Supply
IDP-FL-1560W	300	Projected Capacitive	VGA, DVI, HDMI, Audio In, Audio Out	USB (Default) or RS232	DC Threaded Jack	9-32V DC

Packing List

Optional Items	Qty
IDP-FL-1560W Unit	1
AC-to-DC Adapter 12V/3A	1
Power cable 3-pin, 1.5m	1
Embedded mounting kit	1
Lockable M cable USB-A(M)/USB-A(M), 1.5m	1
VGA cable, 1.5m	1

Options For Default Items

Optional Items	Qty
Power cable 3-pin, 1.5m, USA type	1
Power cable 3-pin, 1.5m, EU type	1
Power cable 3-pin, 1.5m, UK type	1
Desktop support bracket	1
Wall-mounted VESA bracket	1
HDMI cable, 1.5m	1
DVI cable, 1.5m	1
Touchscreen RS-232 cable, 1.5m	1

Optional Accessories

Optional Items	Qty	Description
M Cable 9P/9P (Touchscreen RS-232 cable)	-	2/3/5/10/15m
Lockable M cable USB-A(M)/USB-A(M)	-	2/3m
Rotatable wall-mounted VESA bracket	-	75*75mm
Touchscreen RS-232 module	-	Touch signal transmission distance up to 15m
Advanced touch-module	-	Support touch function even when there is water on the panel
VGA cable	-	2/3/5/10/15m
HDMI cable	-	2/3/5/10/15m
DVI cable, 1.5m	-	2/3/5/10/15m