

IBOX-103-2L3C



- Full aluminum alloy anti-interference structure
- Modular parts with strong scalability
- Fully enclosed with fanless cooling system
- Cable-free design for better vibration resistance
- Scientific and reasonable interface layout
- Double board design with diverse interfaces



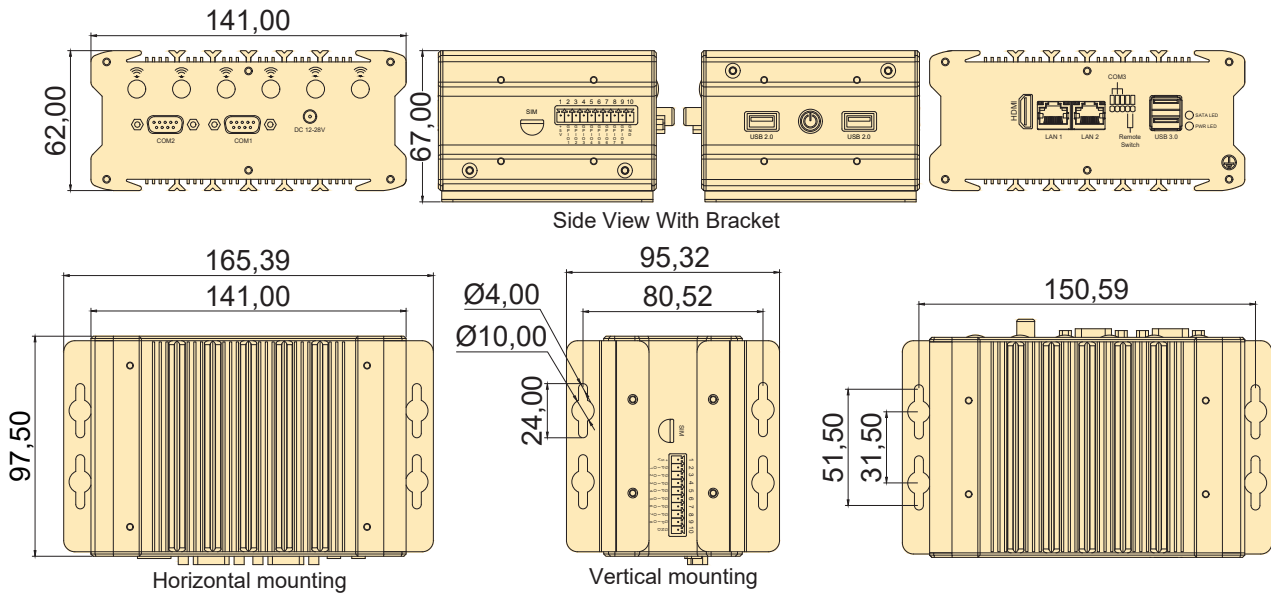
The actual appearance is subject to the final configuration.

Specifications

Model	IBOX-103-2L3C			
Supported OS	Win 7, Win 8, Win 10, Win11, Linux (Ubuntu, Debian, Kali, CentOS, etc.); WES 7; Win 10 IoT			
CPU	Series/ Model	Intel® Core™ 11th Gen. CPU Intel® Celeron® 6305E	Intel® Core™ 8th Gen. CPU	Intel® Celeron® J1900
	TDP	28W default, 12W/15W BIOS optional	15W Base, 25W Max	10W Max
RAM	SO-DIMM	1* DDR4 SO-DIMM Socket	1* DDR4 SO-DIMM Socket	1* DDR3L SO-DIMM Socket
	Frequency	3200MHz	2133/2400MHz	1600MHz
	Capacity	Up to 32GB	Up to 16GB	Up to 8GB
Storage Devices	M.2	1* M.2 (NGFF) 2242 B-key Slot (SATA3.0)		1* M.2 (NGFF) 2242 B-key Slot, (SATA2.0)
I/O Interface	COM	2* RS232/485 with Select Jumper (COM1/2, full lanes, DB9); 1* RS232/485 with Select Jumper (COM3, 2 lanes, 5-Pin, 2.54mm, Terminal Block, with PWR-ON signal)		
	Ethernet	1* Intel i211+1* Intel i219 GbE LAN		2* Intel i210 GbE LAN
	USB	2* USB3.0+2*USB2.0		1*USB3.0+3*USB2.0
	Video	1* HDMI, 4096x2304@60Hz;	1* HDMI, 4096x2304@24Hz	1* HDMI, 1920x1080@60Hz
	Audio	1* Audio Header (Line-out + MIC); With 7.1 channel HD Audio Codec Realtek ALC897		
	SIM	1* External SIM card slot connected to M.2 B-key slot		
	Power supply	12V-28 DC; 1* DC Threaded Jack (5.5* 2.5mm)		
	Other	1* 8-bit GPIO, Terminal Block (10-Pin, 3.5mm), 4-Inputs/4-Outputs, 0-5V Input Range; 1* Remote Switch Terminal (5-Pin, 2.54mm, with COM3)		
Extended Capabilities	Additional Internal Interface	1* M.2 3042/3052 B-key Slot with 1* Nano SIM Card Slot (PCIe+USB2.0, support 4G/5G, default 4G, 3042) 1* M.2 2230 E-key Slot (PCIe+USB2.0, support WiFi+BT)		
Environment	Operating Temperature	-10 ~ 55 °C w/ 0.7m/s Airflow		
	Storage Temperature	-40 ~ 85 °C (-40~185 °F)		
	Relative Humidity	40 °C @ 95%, Non-Condensing		
Physical Characteristics	Dimensions	141* 62* 97.5 mm (W* H* D)		
	Net Weight	1.2 KG		
Regulation	EMC	CE/FCC Class B, CCC		
	Safety	CE-LVD, RoHS, CCC		

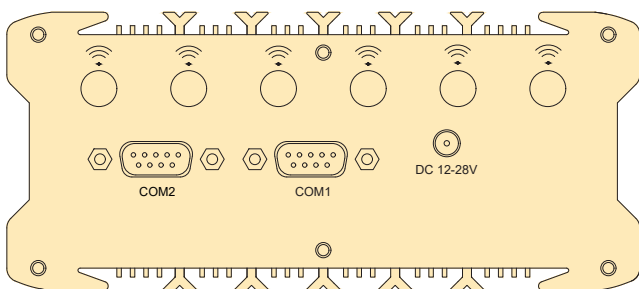
Dimension

Unit:mm

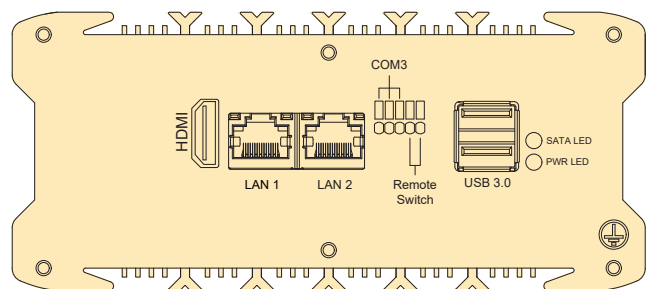


The actual appearance and dimensions are subject to the final configuration

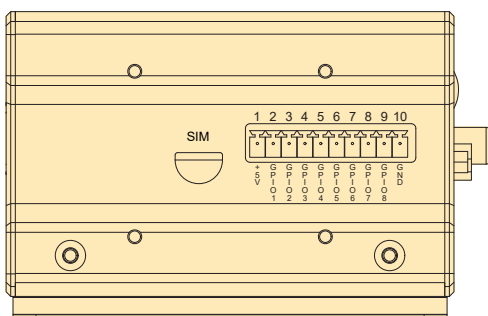
Front Panel External I/O Mechanical Layout/Drawing



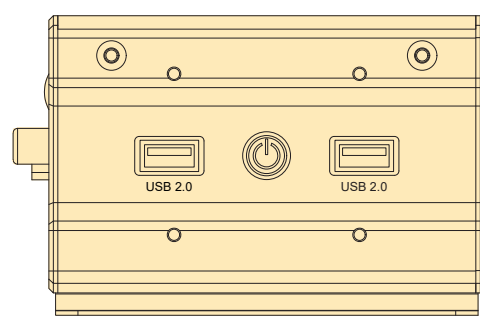
Rear Panel External I/O Mechanical Layout/Drawing



Left Panel External I/O Mechanical Layout/Drawing



Right Panel External I/O Mechanical Layout/Drawing



Ordering Information

SO-DIMM Socket	M.2 2280 B-key Slot	M.2 2230 E-Key Slot	RS232/RS485	GbE LAN	USB 2.0	USB 3.0	HDMI	External SIM Slot	8-bit GPIO	Remote Switch	Power Supply
1	1	1	3	2	2	2	1	1	1	1	DC 12~28V

Processors Info & Available List

CPU	Code Name	Total Cores	Total Threads	Max Turbo Frequency	Base Frequency	Cache	TDP	Memory Types	Integrated Graphics
Intel® Celeron® 6305E	Tiger Lake	2	2	-	1.80 GHz	4 MB Intel® Smart Cache	15W	DDR4	Intel® UHD Graphics
Intel® Core™ I3-1115G4	Tiger Lake	2	4	4.10 GHz	1.70 GHz	4 MB Intel® Smart Cache	12-28W	DDR4	Intel® Iris® Xe Graphics; 48Eus
Intel® Core™ I5-1135G7	Tiger Lake	4	8	4.20 GHz	2.40 GHz	8 MB Intel® Smart Cache	12-28W	DDR4	Intel® Iris® Xe Graphics; 80Eus
Intel® Core™ I7-1165G7	Tiger Lake	4	8	4.70 GHz	2.80 GHz	12 MB Intel® Smart Cache	12-28W	DDR4	Intel® Iris® Xe Graphics; 96Eus
Intel® Core™ I3-8145U	Whiskey Lake	2	4	3.90 GHz	2.10 GHz	4 MB Intel® Smart Cache	15W	DDR4	Intel® UHD Graphics 620
Intel® Core™ I5-8265U	Whiskey Lake	4	8	3.90 GHz	1.60 GHz	6 MB Intel® Smart Cache	15W	DDR4	Intel® UHD Graphics 620
Intel® Core™ I7-8565U	Whiskey Lake	4	8	4.60 GHz	1.80 GHz	8 MB Intel® Smart Cache	15W	DDR4	Intel® UHD Graphics 620
Intel® Celeron® J1900	Bay Trail	4	4	-	2.00 GHz	2 MB L2 Cache	10W	DDR3	Intel® HD Graphics

- When the devices work with 11th Gen. Intel® Core™ processors, it should be working with external fan kit.
- All products and company name listed are trademarks or trade names of their respective companies.

Packing list

Default Items	Qty
IBOX-103-2L3C Unit	1
AC-to-DC Adapter	1
Wall mounting bracket	2
Power cable 3-pin 150cm	1

Options for default items

Optional Items	Qty
Power cable 3-pin 150cm, USA type	-
Power cable 3-pin 150cm, EU type	-
Power cable 3-pin 150cm, UK type	-
VESA mount kits	-
DIN Rail mount kits	-
External Fan Kit For 11th Gen. CPU	-

Optional accessories or internal modules for unit

Optional Items	Max Qty	Description
4G Module	1	Connected by M.2 interface
5G Module	1	Connected by M.2 interface
WiFi Module without AP mode	1	Connected by M.2 interface

!! Note: As this product has expansion slots, please consult sales for the specific maximum number of expandable interfaces.